



# LANDSLIDE ADVISORY

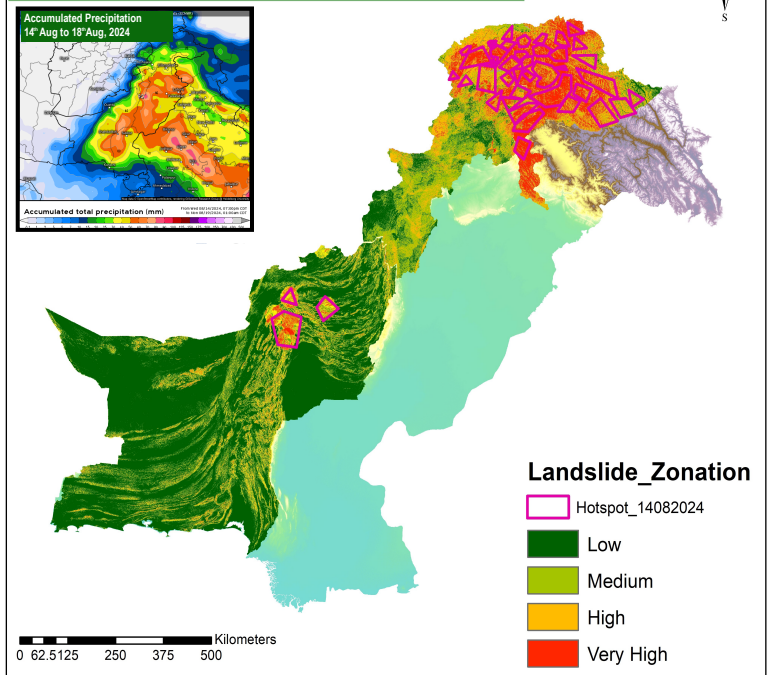
14<sup>th</sup> Aug to 18<sup>th</sup> Aug, 2024



## FORECAST

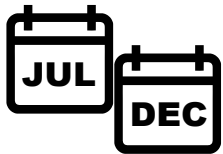
- Reference to National Disaster Management Authority Weather Alert dated 14<sup>th</sup> Aug, 2024, scattered to widespread heavy rainfall is expected in Khyber Pakhtunkhwa, Gilgit Baltistan and Punjab region, with rain accumulation exceeding 80mm.
- As heavy to moderate rain may persist for some days, localized landslides may occur in very high to moderate risk zones .
- Karakoram Highway along Hunza (approx 83kms), at Nagar (approx 49kms), at Gilgit (approx 42kms), at Diamir (approx 90kms), at Kohistan (approx 127kms), at Battagram (approx 44kms), at Mansehra (approx 44.6 kms), at Abbottabad (approx 32.9 kms) is at high risk of landslide.

## Landslide Susceptibility Zonation



LANDSLIDE VULNERABLE ZONES

## BE PREPARED FOR LANDSLIDE



Peak season is July through December



That last a Few Hours or Several Days

## LIKELY IMPACTS OF LANDSLIDE



Road Closures



Isolation of Communities



Structural Damage



Health and Safety Risks

## LIKELY EXPOSED AREAS

KHYBER PAKHTUNKHWA	Swat	Shangla	Abbottabad	GILGIT BALTISTAN	Hunza	Skardu	Ghanche	Astore
	Battagram	Mansehra	Kohistan		Gilgit	Nagar	Diamir	Jaglot
AZAD JAMMU & KASHMIR	Muzaffarabad	BALUCHISTAN	Sherani	Zhob	Musakhel	Killah Saifullah		
Haveli	Bhattian		Pishin	Ziarat	Kalat	Quetta	Mastung	

## IMMEDIATE ACTION

- It is advised to be watchful of Landslides, Slope failures, Rock falls and Ground Subsidence in high vulnerable zones (encircled) in map, avoid unnecessary travel.
- PDMA, Rescue Services, Armed Forces and leading NGOs / CSOs to ensure availability of personnel / equipment in the indicated areas and be on stand-by for rapid response in case of any forecasted adverse weather systems.
- Stay updated on weather & roads condition through social media and local news.

